



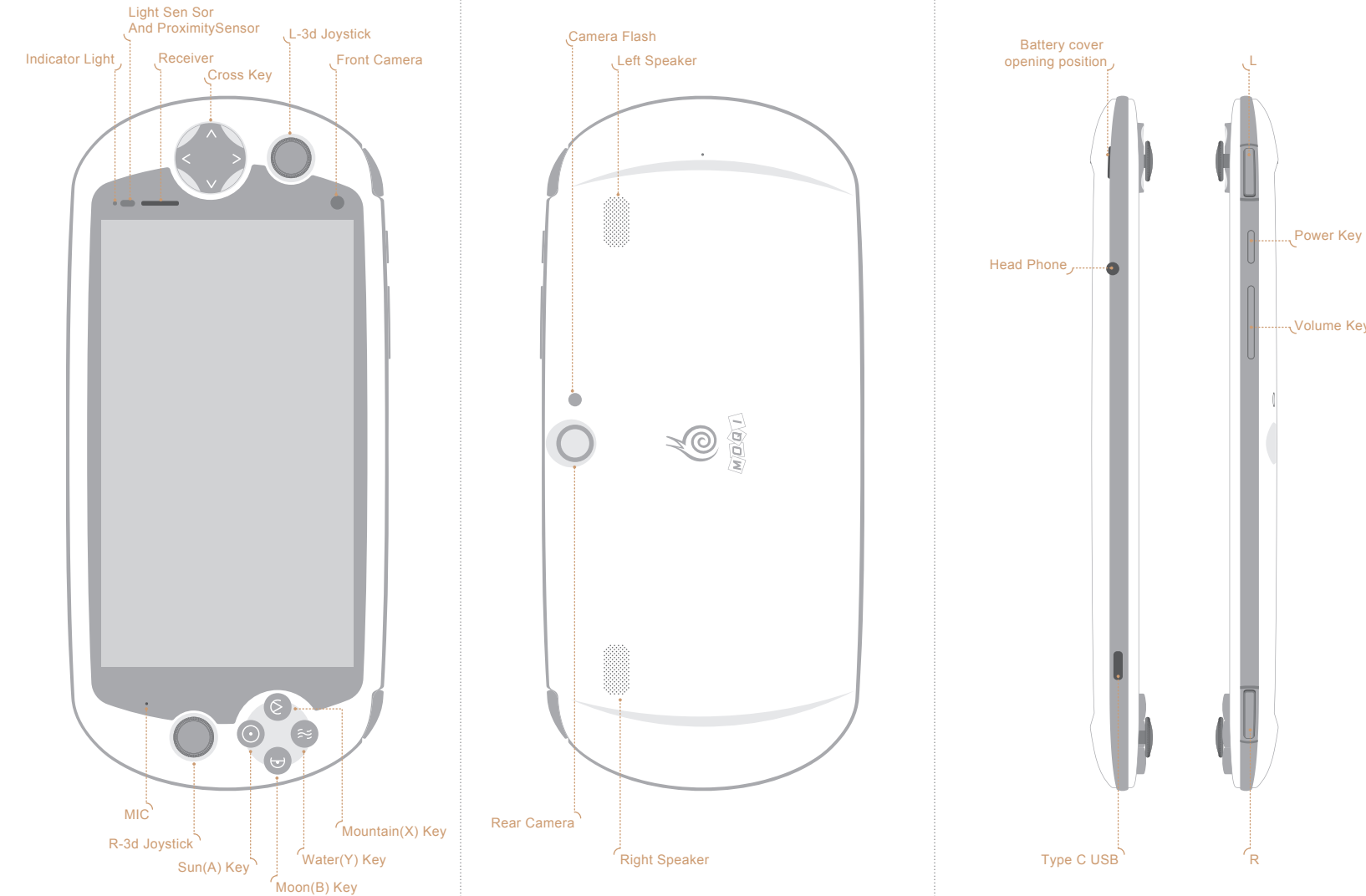
# i7

## User Manual

Before using the product, please carefully read the User Manual.  
To get more information about our products and our company,  
please login: [www.imuch.com](http://www.imuch.com)  
or call our service hotline: +86-4006-61-00-61

## i7 PRODUCT SPECIFICATIONS

### ① Product Drawing



### ② SIM card installation



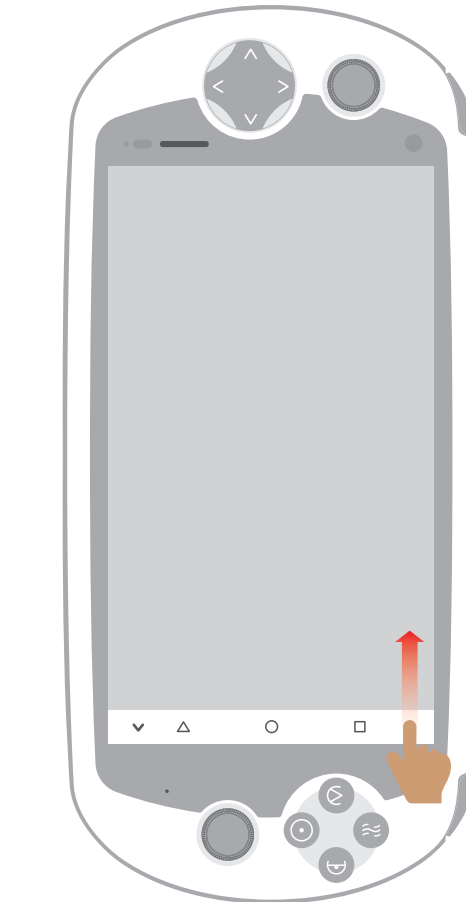
- ① Gently press on "OPEN" and move upwards to open the SIM cover. Unlock the SIM socket, and open the SIM cover.
- ② Put the SIM card into the card socket, with metal contact surface facing downwards and the bevel angle of SIM card corresponding to the bevel angle of the socket, and then cover the SIM cover.
- ③ Gently push in the "LOCK" direction to lock the SIM cover. Ensure the SIM cover is pushed to the bottom.

#### Tips:

1. The mobile phone supports dual-Nano-SIM card with a dimension of 12mm\*9mm. Don't use the non-standard card or the hand-cut card.
2. After the SIM card is installed, the mobile phone should be restarted to make the SIM card recognized by the system.

## MENU

MOQI Mobile Phone Menu will automatically hide after the app is launched. The user can invoke the menu by sliding from bottom (or from right in case of landscape mode). The menu contains the hide, back, home and menu buttons.



## MOQI ASSISTANT

In order to better support the mobile game operation, MOQI Mobile Phone is inbuilt with MOQI Assistant, which provides keymap, one-click skill, one-click macro, and game auxiliary message notification. The user can click on MOQI Assistant floating window to set the keymap operations.

#### Keymap switch:

Open or close the keymap. After the keymap is turned off, the original handle key function will be resumed. Please refer to the attached list for the button value.

#### Directional skill switch:

After the switch is turned on, press on the button to release the skill. Use the right rocking bar to adjust the skill release direction. You can then release skill at desired direction by releasing the key. MOQI Mobile Phone Button supports correlated directional skill.

#### Button tip:

After the button tip is enabled, the set buttons will be displayed on the screen. When it is turned off, the display disappears.

#### Operation tip:

After the operation tip is enabled, MOQI Assistant will be started as well. The user can operate according to the guides. When it is turned off, the display disappears.



### 1.Button configurations

MOQI Mobile Phone has provided different official button configuration plans for different games or different roles in the same game. These configurations are available upon the start of game. The user can add or delete different button configurations based on their use habits. The user can also share button configurations with others or use others' configurations.

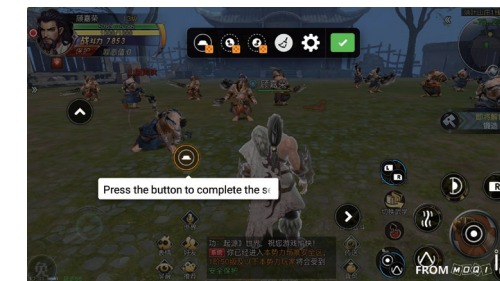
#### Button (Single button and combined buttons):

MOQI Mobile Phone support up to ten single button settings for game skills.

In order to introduce more available buttons, the user can define new buttons by combining any two buttons. When assigning button value on the keymap, the user can press on two buttons within 30ms to generate a new button. Up to 43 combined buttons can be set.

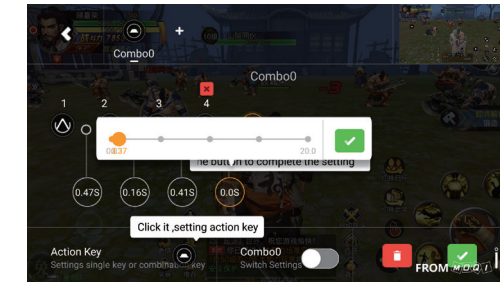
\* All the above 53 single buttons or combined buttons are collectively called buttons.

When playing a game, user can operate the single button or the combined button, or trigger another combined button within 1s after pressing the first combined button. (Take two combined buttons, "L+Sun" and "L+Moon", for example, within 1S after pressing the first combined button, "L+Sun", the user can swift between different skills by pressing "Sun" and "Moon" buttons repeatedly. )



### 2.One-key skill

MOQI Assistant provides the user with a launch button which allow user to trigger a combination of multiple skills. The user can modify and set the skill release interval and combination at his discretion.



\* The time is set to 10ms. To set the time interval more precisely, the coordinate axis adopts unequal intervals. When the numerical value is small, a larger proportional scale should be used.

### 3.One-key macro

MOQI Assistant sets a macro button for the user, which can realize the release of different skills one by one. After finishing the one-key Macro settings, the user can press on the macro button one by one to trigger different skills in sequence. If the macro button is not pressed on for more than 5S, the one-key macro function will automatically be interrupted. The macro button functions will start from the first skill. The user can modify and set the one-key macro at his discretion.



MOQI service Wechat



MOQI BBS:  
[bbs.imuch.com](http://bbs.imuch.com)



MOQI website:  
[www.imuch.com](http://www.imuch.com)



MOQI Weibo



MOQI QQ group

Service hotline:  
**4006-61-00-61**



4.Message notification

Concerning different games and roles, MOQI Assistant provides corresponding official strategies and playing methods. The user can click to get more details.



Call

Apart from the normal mobile phone functions, MOQI Mobile Phone also provides the intelligent scenario-based no-disturbance function:

When the user is playing games, the incoming call reminder interface will neither be interrupted nor cover the current application. The frontend game will not be influenced.

- ① If the user chooses the no-disturbance mode, the incoming call reminder interface will disappear but ring and vibration remain. and the call will not be hung up. The frontend game will not be influenced
- ② If the user chooses the hands-free answering mode, the incoming call reminder interface will disappear. The mode will be automatically changed to the hands-free mode or the headset mode. The frontend game will not be influenced.
- ③ The other two modes include Reject and Answer.

Recharge

MOQI Mobile Phone supports PE + Quick Recharge. When the mobile phone enters the quick charge mode, the charging interface will display the “PE+” symbol. After the mobile phone is turned off, the power can be recharged from 0% to 20% in 15min.

Quick screenshot

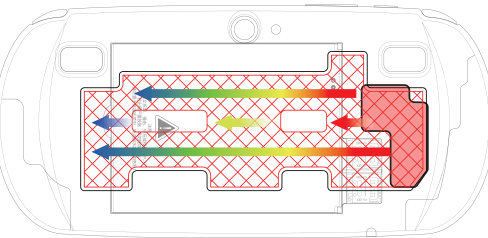
MOQI Mobile Phone is capable of quick screenshot. The function is on by default when the mobile phone is delivered from the factory. After entering into the system, the user can click on the screenshot floating window to capture the screen as long as the screen is on. Press and hold the floating window to enter the screenshot setting.

Quick screenshot supports GIF screenshot at an interval of 10s.

To turn off or turn on this function, the user can set it in the “setting”→“display”→“screenshot setting”.

High performance design

In order to provide the user with better game performance, MOQI Mobile Phone adopts the exposed metal heat irradiator design. The graphite heating pad is added to the battery cover to improve the heat radiation performance, so that the processor can maintain high performance operation for a long time. During the use process, the temperature at the side close to the heat radiator might rise. This is a normal phenomenon of high performance operation of the processor, which will not influence the normal use. Meanwhile, the processor will adjust the performance output via the algorithm so as to keep operation stability.



Basic parameters

Main screen dimensions	6.0 Inches, 16.7-mega pixels, 1920*1080P
Touch screen	Gorilla Class 3 Glass Capacitive Screen
Data service	LTE FDD/TDD R9 Cat6 /DC-HSPA+/EDGE
	Wifi 802.11ac /abgn, Bluetooth 5.0+HS,
	GPS +AGPS
Supported frequency band	GSM: 850/900/1800/2100
	WCDMA: B1/B2/B5/B8
	TD-SCDMA: B34/B39
	LTE FDD: B1/B3/B7/B17
	LTE TDD: B38/B39/B40/B41

Chinese operators	China Mobile: 2G/3G/4G
	China Unicom: 2G/3G/4G
	China Telecom: 4G (Only supporting data service)

Dual SIM Dual Standby (DSDS)	The main card is 4G and the subsidiary card is 2G GSM.
	The user can set the main and subsidiary card at his discretion.

Color	Black
Dimension	207*96*15mm
Weight	About 330g (Including 117g battery)

Hardware parameters

Operating system	MUCH UI (Customized based on Android 7.1)
CPU	MTK6797, ten-core, 2.3Ghz

RAM	4GB
ROM	64GB

Battery type	5800mAh, Li-polymer anti-explosive battery (Exchangeable and dismountable)
GPS	Inbuilt with GPS, supporting A-GPS

Sensor type	Nine-axis sensor (gyroscope, electronic compass, and gravitational sensing), light sensor, proximity sensor
-------------	---

Rear camera	16-mega pixels
Front camera	5-mega pixels

Audio	Dual-path Class-K amplifier and dual-speaker stereo
-------	---

Hardware interface and others

Data hardware interface	Type C interface 12V1.5A, PE + Quick charge
-------------------------	---

Headset socket	Four-phase 3.5mm stereo headset interface (Following the international standard, CTIA)
----------------	--

Attached list:  
Instructions for the button value

Single button	Android button value	Single button	Android button value
Left Joystick	106	L	102
Right Joystic	107	R	103
Down	19	Sun	96
Up	20	Moon	97
Left	21	Mountain	99
Right	22	Water	100

\* The above shows the Android button value by default, same as the button value of the Android handle (ABXY).

Combined buttons	Android button value	Combined buttons	Android button value
L+R	1045		
L+Sun	1034	R+Sun	1035
L+Moon	1038	R+Moon	1039
L+Mountain	1041	R+Mountain	1042
L+Water	1043	R+Water	1044
L+Up	1008	R+Up	1009
L+Down	1016	R+Down	1017
L+Left	1023	R+Left	1024
L+Right	1029	R+Right	1030
Up+Sun	1004	Down+Sun	1012
Up+Moon	1005	Down+Moon	1013
Up+Mountain	1006	Down+Mountain	1014
Up+Water	1007	Down+Water	1015
Up+Left	1002	Down+Left	1010
Up+Right	1003	Down+Right	1011
Up+Down	-	Left+Right	-
Left+Sun	1019	Right+Sun	1025
Left+Moon	1020	Right+Moon	1026
Left+Mountain	1021	Right+Mountain	1027
Left+Water	1022	Right+Water	1028
Sun+Moon	1031	Moon+Mountain	1036
Sun+Mountain	1032	Moon+Water	1037
Sun+Water	1033	Mountain+Water	1040

\* The above are the combined button values of the mobile phone.

User Manual

Thanks for buying this device,the product will provide you qualified communication and entertainment service.

This manual will help you learn about the function and features of the device.

Before using this product, please carefully read all the security information along with this manual, in order to ensure safe and proper use.

◎ The descriptions in this manual are based on the terminal's default settings.

◎ Images and screen shots used in this manual may be different from the actual product appearance.

◎ The contents in this manual may be different from products, and may also be different from the software provided by the service provider. Any changes will be without prior notice.

◎ Features available and the additional services may be different owing to the different products, software or service providers.

◎ The format and information in the manual are based on the operating system Google Android; users' operation systems may differ from it.

◎ The the function of applications and programs may differ due to differences in national, regional or hardware standards. Responsibility for performance problems caused by third-party applications will not be born by us.

◎ The firm will not liable to any responsibility for performance problems causes by the third-party applications.

◎ Other fees may be created by sending and receiving messages, uploading and down loading, using automatic synchronization or location services. If you would like to avoid additional costs, please choose the appropriate data charge plan. For more information, please contact the service provider.

◎ Images and screen shots used in this manual may be different from the actual product appearance.

Please read this manual before operating the device and keep it for future reference.

The firm continue to strive for perfect in all phases of design,R&D,manufacturing, test and seals, as mean while, we keep close contact with consumers,every demand will be well satisfied by the team through innovation, diligence and teamwork. In order to offer quicker and higher-quality services, we will work hard to provide a rich experience through our gaming products. With our products, you can easily manipulate popular titles and enjoy the most modern games in vivid graphic detail.Hangzhou iReadyGo Intelligence Technology Co.Ltd. Reserves the right to improve the described products, if specifications are subject to change. Any update and changes will not be noticed, please take the product as standard, the firm reserve the right of final explanation.

【 Warranty Card 】

Product Information		Customer Name	
Product Model		Gender	
Serial No.		Contact Tel.	
Device		E-mail	
Date Cable		Mailing Address	
charger		Dealer Name	
Others		Dealer Tel.	
Purchase Date		Mailing Address	
Invoice No.			

【 Repair Records 】

Repair Records		Delivery Date	
Fault Status			
Fault Cause			
Repair Status			
Return & Change State			
Repari Department Name		Seal	
Telephone		Postal Code	
Address			

For more information, please scan the two-dimensional code